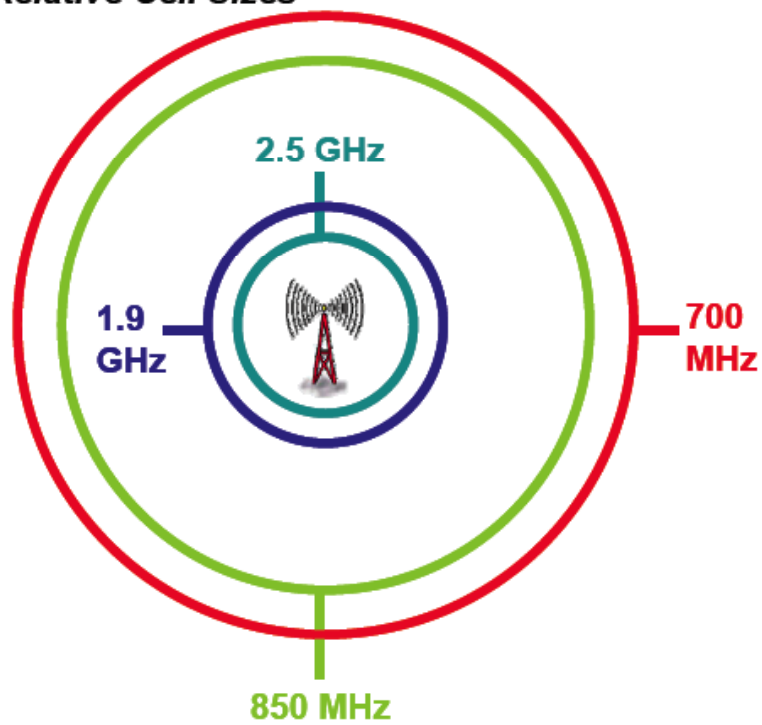


# **An Antitrust Analysis of the Case for Wireless Net Neutrality**

Gregory Rosston and Michael Topper

**Relative Cell Sizes**



## Wireless Concentration

	<b>HHI</b>
2003	2151
2004	2450
2005	2706
2006	2674
2007	2674

## Percentage of Population with Access to Wireless Services by Number of Providers

<b>Providers in County</b>	<b>2000</b>	<b>2004</b>	<b>2005</b>	<b>2006</b>	<b>2007</b>	<b>2008</b>
<b>3 or More</b>	87.8%	96.8%	96.9%	98.0%	98.0%	95.5%
<b>4 or More</b>	79.8%	93.0%	93.2%	93.8%	93.6%	90.5%
<b>5 or More</b>	68.5%	87.5%	87.3%	50.8%	59.1%	64.9%

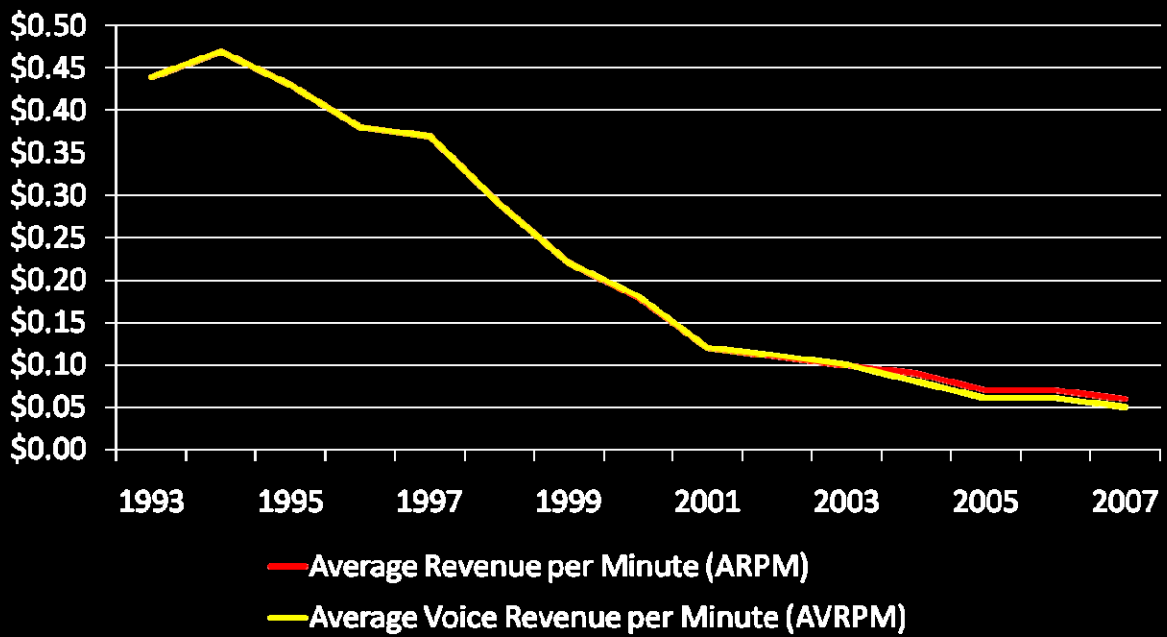
## Percentage of Population with Access to Wireless Services by Number of Providers

Providers in County	2000	2004	2005	2006	2007	2008
3 or More	87.8%	96.8%	96.9%	98.0%	98.0%	95.5%
4 or More	79.8%	93.0%	93.2%	93.8%	93.6%	90.5%
5 or More	68.5%	87.5%	87.3%	50.8%	59.1%	64.9%

## Percentage of Population with Access to Wireless Services by Number of Providers

<b>Providers in County</b>	<b>2000</b>	<b>2004</b>	<b>2005</b>	<b>2006</b>	<b>2007</b>	<b>2008</b>
<b>3 or More</b>	87.8%	96.8%	96.9%	98.0%	98.0%	95.5%
<b>4 or More</b>	79.8%	93.0%	93.2%	93.8%	93.6%	90.5%
<b>5 or More</b>	68.5%	87.5%	87.3%	50.8%	59.1%	64.9%

# Wireless Service Revenue



## Wireless Subscribers, Minutes of Use, and Penetration

	<b>CMRS Wireless Subs (Millions)</b>	<b>CTIA Wireless Subs (Millions)</b>	<b>Average Minutes</b>	<b>Wireless Penetration Rate</b>	<b>Wireless Only</b>
2001	128.5	119.9	380	45%	
2002	141.8	131.8	427	49%	
2003	160.6	152.7	507	54%	3.5%
2004	184.7	173.8	584	62%	5.4%
2005	213.0	200.5	708	71%	7.7%
2006	241.8	225.9	714	80%	11.8%
2007	263.0	245.8	769	86%	14.5%

## Data on Data

	<b>Text/SMS Volume (billions)</b>	<b>MMS Volume (billions)</b>
Dec 2004	24.71	
Jun 2005	32.54	0.28
Dec 2005	48.66	0.85
Jun 2006	64.82	1.14
Dec 2006	93.83	1.59
Jun 2007	146.99	2.61
Dec 2007	215.56	3.49
Jun 2008	384.97	5.63